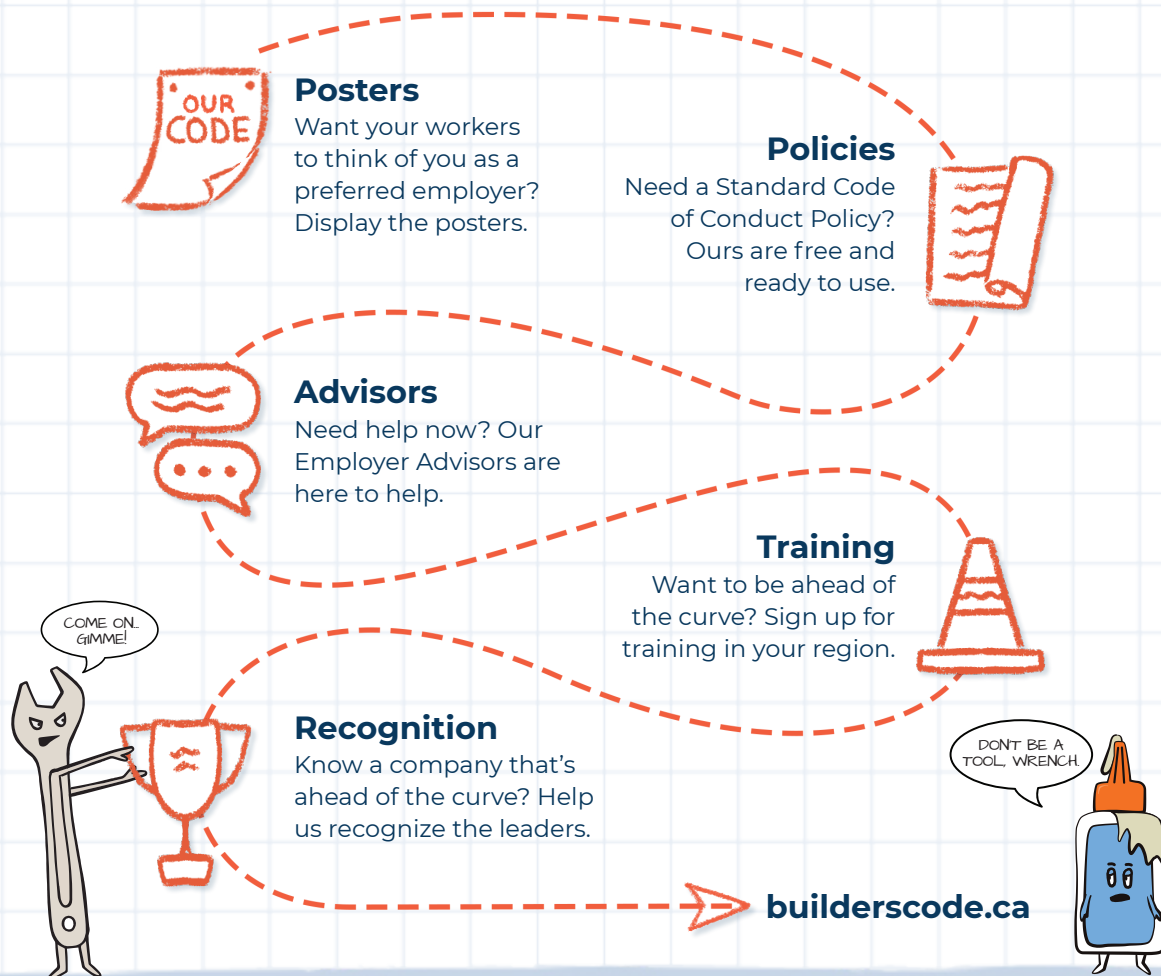


# Builders<sup>®</sup> Code

**Together we're building a construction industry that works for everyone.**

The Builders Code sets a standard code of conduct for workers on construction sites. It defines an "Acceptable Worksite" as the starting point for reducing risk and ensuring a safe and productive environment for all workers. The Builders Code is intended to help construction employers communicate a reasonable, consistent behaviour expectation to improve the safety, productivity and retention of skilled tradespeople, and reduce project risk.

## Ready available resources for construction employers:



## Employer Advisors are here for you

The Builders Code **Employer Advisors** are knowledgeable coaches ready to help construction employers navigate developing HR situations on the worksite related to hazing, harassment, and bullying. The Employer Advisor will work with employers and/or site supers and managers, and union business managers in an effort to resolve a situation fairly, quickly, and productively for all parties. The goal is retention of the tradesperson and safety on the worksite.

## How can you become a Builders Code employer?

Start by signing **the Pledge**, it's easy! Print copies to include in employee handbooks and welcome kits, and even post in your site office, lunchroom, or anywhere your team gathers regularly. Then, download the **Employer Toolkit**, which will help you take advantage of all the complimentary resources available to help improve safety for your whole team. Visit [builderscode.ca](http://builderscode.ca) or contact an **advisor**. They'll get you off on the right track for your company with a complementary consultation.

## What people are saying:

“

As a small business in the construction industry without a dedicated human resources department, Sierra Landscaping will greatly benefit from the professional online resources and materials developed and made available through the program.

— **Veronica Scarpino**, Partner, Sierra Landscaping

“

Our people are what makes Houle successful, and we're devoted to providing a safe and healthy work environment for all our employees.

— **Paul Hill**, President, Houle Electric

“

Scott Construction is committed to being an industry leader for employee health and safety, particularly in the area of mental health. As an early adopter of the Builders Code, we can attest to the value of the resources available through this program and their effectiveness in the reduction of workplace bullying, hazing and harassment.

— **Kellyann Williams**, HR Manager, Scott Construction

TOGETHER WE'RE BUILDING A  
CONSTRUCTION INDUSTRY THAT WORKS FOR EVERYONE



[builderscode.ca](http://builderscode.ca)